

There began an era when the streets were bare by five o'clock
Children stared into the empty eyes of parents eyes of solid rock
Electric Eye shines urgently to usher in consistency
Just to pose a threat to all the men hired nine-to-five to service them

A satellite dish in every backyard takes you live to the end of the world
Electric Eye sees a billion hearts bleed and there's no place to run to, girl

And a boy says . . . "This is just a difficult day in a typical day of a life
Did you think that there was sunshine and blue-birds singing (there)
Did you think you were in Paradise?" Paradise?

Newspaper blowing a-round my feet
The words fall out into the street
They say Extra, Extra, come read all about
The fire in Cleveland will never be out
And Electric Eye knew all that
Before the ink was dry or the paper wet
You can take the Plain Dealer and throw it away
Because Electric Eye's got it all on tape

And a satellite dish in every backyard takes you live to the end of the world
Electric Eye sees a billion hearts bleed and there's no place to run to, girl

And a boy says . . . "This is just a difficult day in a typical day of a life
Did you think that there was sunshine and blue-birds singing (there)
Did you think you were in Paradise?"

Ahhh, Paradise isn't that nice. I've been there twice
Ahhh, Paradise isn't that nice. In fact it's cold as ice

And a satellite dish in every backyard takes you live to the end of the world
Electric Eye sees a billion hearts bleed and there's no place to run to, girl

And a boy says . . . "This is just a difficult day in a typical day of a life
Did you think that there was sunshine and blue-birds singing (there)
Did you think you were in Paradise?"

This is just a difficult day in a typical day of a life
Extra, Extra, come read all about
The fire in Cleveland will never be out
This is just a difficult day; this is just a difficult day
This is just a difficult day; a difficult, difficult, difficult,
Difficult, difficult, difficult day In Paradise

INTRO: F#m - E -e-b-g-e-b-g-e (single notes are lower-case)

F#m - E -e-b-g-e-b-g-e

F#m - E - C#m (4th fret)

F#m - E - D - E (last E always played at 9th fret)

F#m - E - D - E (9th fret)

F#m E D E
 There began an era when the streets were bare by five o'clock
 F#m E D E
 Children stared into the empty eyes of parents eyes of solid rock
 F#m E D E
 Electric Eye shines urgently to usher in consistency
 F#m E D
 Just to pose a threat to all the men hired nine-to-five to service them
 E D
 A satellite dish in every backyard takes you live to the end of the world
 E D
 Electric Eye sees a billion hearts bleed and there's no place to run to, girl
 Am A F#m A F#m
 And a boy says . . . this is just a difficult day in a typical day of a life
 A F#m
 Did you think that there was sunshine and blue-birds singing (there)
 A E F#m
 Did you think you were in Paradise, . . . Par-a- dise

CORDS: F#m - E - D - E (last E always played at 9th fret)

F#m - E - D - E (9th fret)

F#m E
 Newspaper blowing a-round my feet
 D E
 The words fall out into the street
 F#m E
 They say Extra, extra, come read all about
 D E
 The fire in Cleveland will never be out
 F#m E
 And Electric Eye knew all that
 D E
 Before the ink was dry or the paper wet
 F#m E
 You can take the Plain Dealer and throw it away
 D
 Because Electric Eye's got it all on tape
 E D
 And a satellite dish in every backyard takes you live to the end of the world
 E D
 Electric Eye sees a billion hearts bleed and there's no place to run to, girl

Ab A F#m A F#m
 And a boy says . . . this is just a difficult day in a typical day of a life
 A F#m
 Did you think that there was sunshine and blue-birds singing (there)
 A E
 Did you think you were in . . . P-a-r-a- dah - ahhh ahhh ahhh . . .
 C G C G
 Ahhh, Par-a-dise isn't that nice. I've been there twice
 C G C E
 Ahhh, Par-a-dise isn't that nice. In fact it's cold as ice

CORDS: F#m - E - D - E (last E always played at 9th fret)
 F#m - E - D - E (9th fret)

E D
 And a satellite dish in every backyard takes you live to the end of the world
 E D
 Electric Eye sees a billion hearts bleed and there's no place to run to, girl
 Ab A F#m A F#m
 And a boy says . . . this is just a difficult day in a typical day of a life
 A F#m
 Did you think that there was sunshine and blue-birds singing (there)
 A E
 Did you think you were in P-a-r-a- d-i-s-e, . . .
 A F#m A F#m
 This is just a difficult day in a typical day of a life
 F#m A
 Extra, extra, come read all about
 F#m E
 The fire in Cleveland will never be out
 A F#m
 This is just a difficult day
 A F#m
 This is just a difficult day
 A F#m
 This is just a difficult day
 A F#m A E
 A difficult, difficult, difficult, difficult, difficult, difficult day
 C#m
 In Paradise

Paradise

Intro:

By Don Mathers

Guitar

Transcribed by Nat Simpkins

Staff 1: F#m E F#m E

Staff 2: F#m E C#m

Staff 3: F#m E C#m C#m

Staff 4: F#m E D D E

Staff 5: F#m E D D D E

Staff 6: F#m E D D D E

Staff 7: F#m E D D D E

Staff 8: F#m E D D D E

There be-gan an er-a when the streets were bare by five o-'clock.

Chil-dren stared in-to the emp-ty eyes of par-ents eyes of sol-id rock.

E-lec-tric Eye shines ur-gent-ly to ush-er in con-sis-ten-cy. Just to

pose a threat to all the men hired nine-to-five to ser-vice them. A

Paradise

33 **E**
 sat - el - lite dish in ev - 'ry back - yard takes you

35 **D**
 live to the end of the world. E -

37 **E**
 lec - tric Eye sees a bil - lion hearts bleed and there's

39 **D**
 no place to run to, Girl. And a boy says

41 **A** **F#m**
 "This is just a diff - i - cult day__ in a

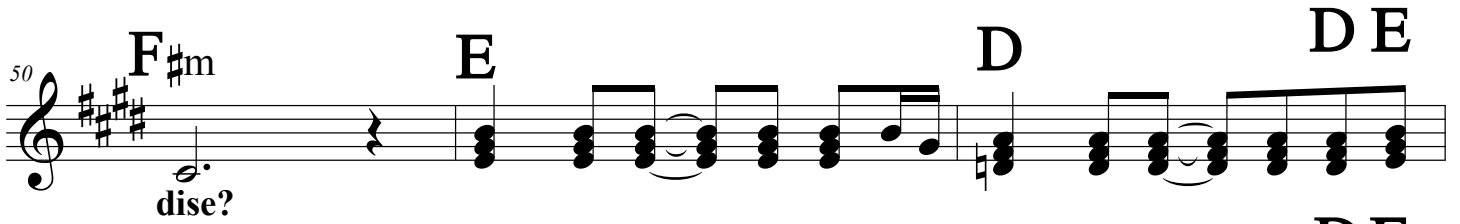
43 **A** **F#m**
 ty - pi - cal day of a life. Did you think that there was

45 **A** **F#m**
 sun - shine and blue - birds sing - ing there? Did you

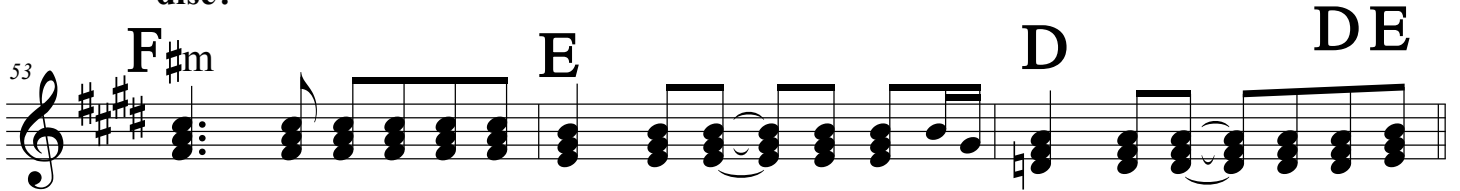
47 **A** **E**
 think you were in__ Par - a - dise?"__ Par - a -

3
Paradise

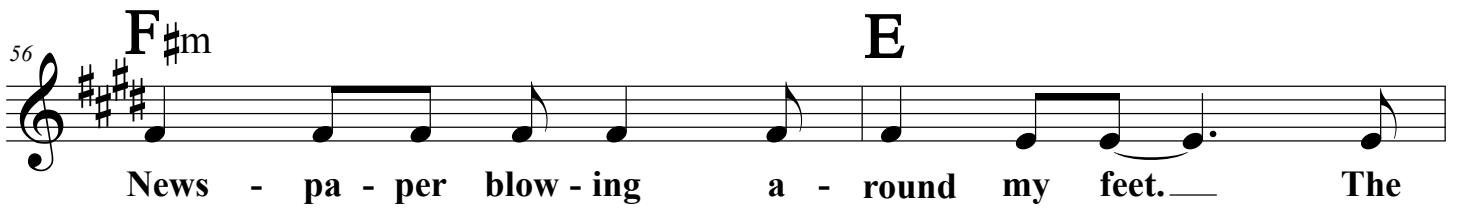
50 **F#m** **E** **D** **DE**
dise?



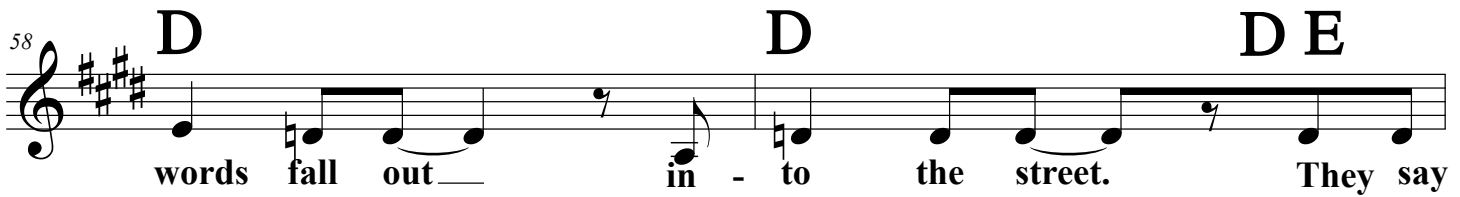
53 **F#m** **E** **D** **DE**



56 **F#m** **E**
News - pa - per blow - ing a - round my feet. — The



58 **D** **D** **DE**
words fall out — in - to the street. They say




60 **F#m** **E**
Ex - tra, Ex - tra, come read all a - bout the



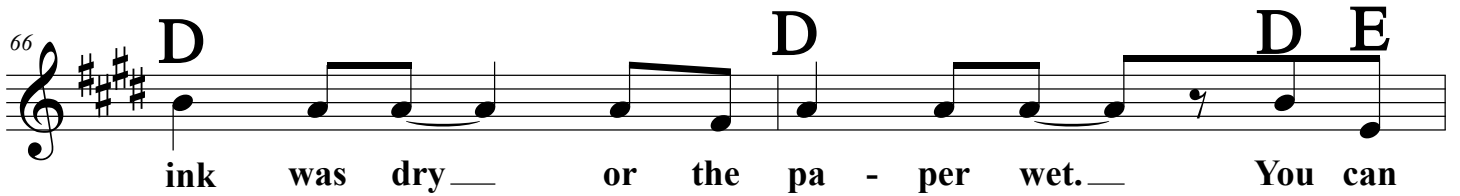
62 **D** **D** **DE**
fire in Cleve - land will nev - er be out. And



64 **F#m** **E**
E - lec - tric Eye — knew all that, — be - fore the



66 **D** **D** **DE**
ink was dry — or the pa - per wet. — You can



4
Paradise

68 **F#m** **E**
take the Plain Deal - er and throw it a - way, be - cause E -

70 **D** **D** **D E**
lec - tric Eye's_ got it all on tape. And a

72 **E**
sat - el - lite dish in ev - 'ry back - yard takes you

74 **D**
live to the end of the world. **E -**

76 **E**
lec - tric Eye sees a bil - lion hearts bleed and there's

78 **D**
no place to run to, Girl. And a boy says

80 **A** **Fm**
"This is just a diff - i - cult day in a

82 **A** **Fm**
ty - pi - cal day of a life. Did you think that there was

5
Paradise

84 **A** **F_m**
sun - shine and blue - birds sing - ing there? Did you

86 **A** **E**
think you were in Par - a - di - i - ise? "

89 **C** **G**
Ahhh, Par - a - dise ain't that

93 **C** **G**
nice. I've been there twice.

97 **C** **G**
Ahhh, Par - a - dise is - n't so

101 **C** **E**
nice. If not in fact it's cold as ice. _

105 **F_m** **E** **D** **D** **E**
[Instrumental accompaniment]

109 **F_m** **E** **D** **D** **E**
[Instrumental accompaniment]

6
Paradise

113 **E**
sat - el - lite dish in ev - 'ry back - yard takes you

115 **D**
live to the end of the world. **E -**

117 **E**
lec - tric Eye sees a bil - lion hearts bleed and there's

119 **D**
no place to run to, Girl. And a boy says

121 **A** **F#m**
"This is just a diff - i - cult day in a

123 **A** **F#m**
ty - pi - cal day of a life. Did you think that there was

125 **A** **F#m**
sun - shine and blue - birds sing - ing there? Did you

127 **A** **E**
think you were in _____ Par - a - dise? _____

7
Paradise

130 **A** **F#m**
"This is just a diff - i - cult day in a

132 **A** **F#m**
ty - pi - cal of a life. Ex - tra, ex - tra, come read

134 **A** **F#m**
all a - bout the fire in Cleve - land__ will nev -

136 **E** **E** **E**
er be out.__

139 **A** **F#m**
"This is just a diff - i - cult day;"

141 **A** **F#m**
This is just a diff - i - cult day; a

143 **A** **F#m**
dif - fi - cult, diff - i - cult, diff - i - cult, Diff - i - cult,

145 **A** **E** **C#m**
dif - fi - cult, diff - i - cult day, In Par - a - dise.

Violin Scores

PARADISE

SCORE

"PARADISE"

Intro

Handwritten musical notation for the Intro section. It consists of six staves of music in G major (one sharp). The first staff shows the chord progression: F#m, E, F#m, E, F#m, E, G#m. The notation includes various rhythmic values, including eighth and sixteenth notes, and rests. The second and third staves feature more complex rhythmic patterns with triplets and sixteenth-note runs. The fourth and fifth staves continue the melodic and harmonic development. The section concludes with a final chord of E.

TEMA:

BRIDGE

CHORUS

Handwritten musical notation for the Chorus section. It consists of two staves. The first staff shows the chord progression: A, F#m, A, F#m, A, F#m. The second staff contains a rhythmic accompaniment with a repeating eighth-note pattern and some triplet figures. The notation includes accents and dynamic markings.

Orchestra Solo

Handwritten musical notation for the Verse 2 section. It consists of three staves. The first staff shows the chord progression: F#m, E, D, D, E, F#m, E, D, D, E. The second and third staves feature a rhythmic accompaniment with a consistent eighth-note pattern and accents. The notation includes various rhythmic values and dynamic markings.

Handwritten musical score for guitar, featuring multiple systems of staves. The score includes various musical notations such as chords (F#m, E, D, A, G, C), dynamics (accents), and articulation (trills, triplets). Section labels include "BRIDGE", "CHORUS", and "Solo (Orchestra)". The manuscript is written in ink on aged paper.

Handwritten musical score on five staves. The first staff contains a melodic line with notes and rests, with chord symbols A, F#m, A, F#m, A, F#m written above. The second staff contains a bass line with notes and rests, with chord symbols A, F#m, A, and a 7 chord above. The third staff contains a bass line with notes and rests, with the text "Solo (Orchestra)" written above. The fourth and fifth staves contain bass lines with notes and rests, with a 3 chord above the first two measures of the fifth staff.

Violin I

PARADISE

"

Violin I

"PARADISE"

VERSE 1.

BRIDGE

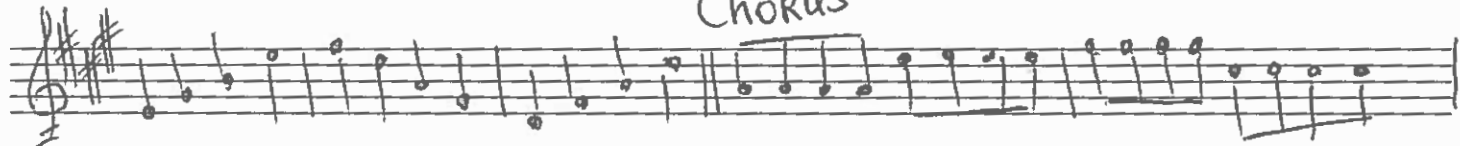
CHORUS

Solo (Orchestra)

VERSE 2

BRIDGE

Chorus



Bridge



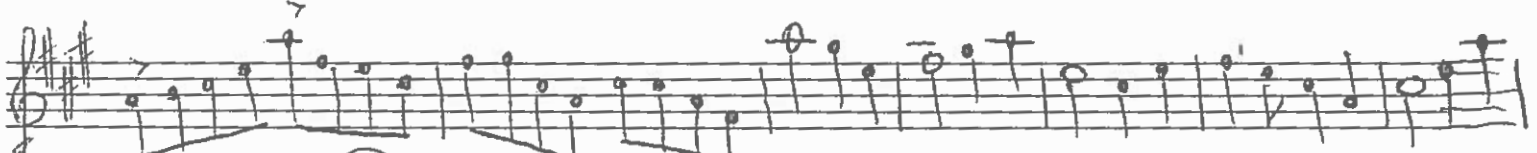
Solo (Orchestra)



Bridge



Chorus



V.S →

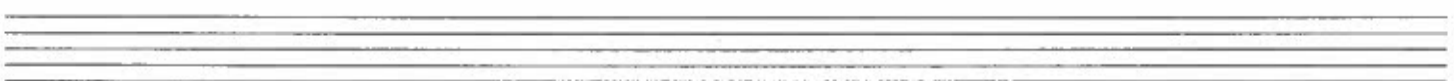
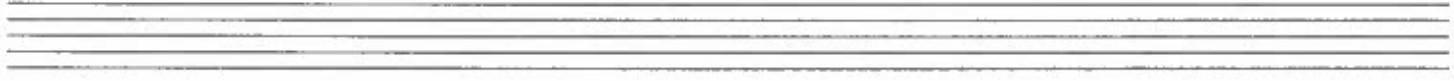
Handwritten musical notation on a single staff. The notation includes a treble clef, a key signature of one sharp (F#), and a 3/4 time signature. The first measure contains a quarter rest. The second measure features a triplet of eighth notes with a slur and an accent (>) above it. The third, fourth, and fifth measures each contain a triplet of eighth notes with a slur and an accent (>) above them. The sixth and seventh measures each contain a triplet of eighth notes with a slur and an accent (>) above them. The eighth measure contains a quarter note with an accent (>) above it. The ninth measure contains a quarter note with an accent (>) above it. The piece concludes with a double bar line and a fermata over the final note.

Ten blank musical staves, each consisting of five horizontal lines, arranged vertically on the page.



Violin II

PARADISE



Handwritten musical notation on a single staff, featuring a treble clef, a key signature of two sharps (F# and C#), and a 4/4 time signature. The notation includes a series of eighth and quarter notes.

Handwritten musical notation on a single staff, labeled "VERSE 1". It features a treble clef, a key signature of two sharps, and a 3/4 time signature. The notation includes eighth and quarter notes with accents.

Handwritten musical notation on a single staff, continuing the "VERSE 1" section. It features a treble clef, a key signature of two sharps, and a 3/4 time signature. The notation includes eighth and quarter notes with accents.

Handwritten musical notation on a single staff, divided into two sections: "BRIDGE" and "CHORUS". The "BRIDGE" section features a treble clef, a key signature of two sharps, and a 3/4 time signature with eighth notes. The "CHORUS" section features a treble clef, a key signature of two sharps, and a 3/4 time signature with quarter notes.

Handwritten musical notation on a single staff, featuring a treble clef, a key signature of two sharps, and a 3/4 time signature. The notation includes eighth and quarter notes with accents.

Handwritten musical notation on a single staff, labeled "Solo (Orchestra)". It features a treble clef, a key signature of two sharps, and a 3/4 time signature. The notation includes eighth and quarter notes with accents and triplets.

Handwritten musical notation on a single staff, labeled "VERSE 2". It features a treble clef, a key signature of two sharps, and a 4/4 time signature. The notation includes eighth and quarter notes with accents and triplets.

Handwritten musical notation on a single staff, continuing the "VERSE 2" section. It features a treble clef, a key signature of two sharps, and a 3/4 time signature. The notation includes eighth and quarter notes with accents and triplets.

Handwritten musical notation on a single staff, labeled "BRIDGE". It features a treble clef, a key signature of two sharps, and a 3/4 time signature. The notation includes eighth and quarter notes with accents and triplets.

Handwritten musical notation on a single staff, labeled "CHORUS". It features a treble clef, a key signature of two sharps, and a 3/4 time signature. The notation includes eighth and quarter notes with accents and triplets.

Handwritten musical notation on a single staff, featuring a treble clef, a key signature of two sharps, and a 3/4 time signature. The notation includes eighth and quarter notes with accents and triplets.

Handwritten musical notation on a single staff, labeled "BRIDGE". It features a treble clef, a key signature of two sharps, and a 3/4 time signature. The notation includes eighth and quarter notes with accents and triplets.

Solo (Orchestra) BRIDGE

CHORUS

VIOLIN III.

PARADISE^v

Handwritten musical score for Violin II, titled "PARADISE". The score is written on ten staves in treble clef with a key signature of two sharps (F# and C#). The time signature is 4/4.

The score is divided into several sections:

- VERSE 1:** The first two staves. The first staff begins with a 12-measure rest, followed by a melodic line. The second staff continues the melody with some triplets.
- BRIDGE:** The third staff, featuring a melodic line with accents.
- CHORUS:** The fourth staff, starting with a 2-measure rest, followed by a melodic line.
- VERSE 2:** The fifth and sixth staves, continuing the melodic development.
- BRIDGE:** The seventh staff, featuring a melodic line with accents.
- CHORUS:** The eighth staff, continuing the melodic line.
- BRIDGE:** The ninth staff, featuring a melodic line with accents and triplets.
- Solo (Orchestra):** The tenth staff, featuring a melodic line with accents and triplets.
- BRIDGE:** The eleventh staff, featuring a melodic line with accents.

The score includes various musical notations such as rests, notes, stems, beams, slurs, accents, and dynamic markings. There are also some handwritten annotations like "12" and "7" above notes.

Chorus

Handwritten musical notation for a chorus section, consisting of five staves. The music is in treble clef with a key signature of two sharps (F# and C#). The first staff begins with a 4-measure rest and contains a melodic line with accents. The second staff continues the melody with a 4-measure rest. The third staff features a series of eighth-note patterns with accents and two triplet markings. The fourth staff continues with eighth notes and a triplet. The fifth staff concludes with a triplet and a double bar line.

Seven empty musical staves for manuscript paper.

VIOLINE 4

PARADISE "

Violini 4.

"PARADISE"

Handwritten musical score for Violini 4, titled "PARADISE". The score is written on ten staves in treble clef with a key signature of two sharps (F# and C#). The piece is divided into several sections:

- Intro:** The first staff begins with a double bar line and a slash, followed by a measure with a '12' written above it. The music consists of quarter notes and eighth notes.
- VERSE 1:** Labeled above the second staff, this section continues with eighth and quarter notes.
- CHORUS:** Labeled above the fourth staff, this section features a series of quarter notes, some with accents, and a triplet of eighth notes.
- Solo (Orchestra):** Labeled above the sixth staff, this section includes a triplet of eighth notes and a measure with a '12' written above it.
- VERSE 2:** Labeled above the seventh staff, this section continues with eighth and quarter notes.
- BRIDGE:** Labeled above the eighth staff, this section features a series of eighth notes with accents.
- CHORUS:** Labeled above the ninth staff, this section continues with eighth and quarter notes.
- BRIDGE:** Labeled above the tenth staff, this section features a series of eighth notes with accents.
- Solo (Orchestra):** Labeled above the eleventh staff, this section includes a series of eighth notes and a triplet of eighth notes.
- CHORUS:** Labeled above the twelfth staff, this section continues with eighth and quarter notes.
- BRIDGE:** Labeled above the thirteenth staff, this section features a series of eighth notes with accents.
- Solo (Orchestra):** Labeled above the fourteenth staff, this section includes a series of eighth notes and a triplet of eighth notes.
- CHORUS:** Labeled above the fifteenth staff, this section continues with eighth and quarter notes.
- BRIDGE:** Labeled above the sixteenth staff, this section features a series of eighth notes with accents.
- Solo (Orchestra):** Labeled above the seventeenth staff, this section includes a series of eighth notes and a triplet of eighth notes.
- CHORUS:** Labeled above the eighteenth staff, this section continues with eighth and quarter notes.
- BRIDGE:** Labeled above the nineteenth staff, this section features a series of eighth notes with accents.
- Solo (Orchestra):** Labeled above the twentieth staff, this section includes a series of eighth notes and a triplet of eighth notes.

Handwritten musical notation on three staves. The first staff contains a sequence of eighth notes with accents and slurs, followed by two triplet markings. The second staff begins with a '5' and a slash, followed by eighth notes and a triplet. The third staff contains two triplet markings and ends with a fermata.

Ten blank musical staves for writing.